



The Rock Foundation

Growing up as a person with special needs

磐石協會關愛成長路



The Rock Programme

Nurturing Our Passion!

WHY

The Rock Foundation ?

- bring out your passion in life
- discover your strengths and abilities
- open up space for internship and employment
- provide continuous learning and social support

About The Rock Foundation

Who are we?

We are a special group of people, trying to discover our passion and talents, creating a culture of purpose in life that contributes to the better of society and humanity.

Our Mission

To enable persons with disabilities and/or special educational needs, to be proud of their abilities and contribute their best in society.

Our Vision

To enable a community of love and respect where people of differences live together in hope, harmony and mutuality.

The Rock of
the unconditional
LOVE of God



The Person

In hope,
harmony &
mutuality



What we offer

We offer **3** major areas of services

- I. Post-secondary social and vocational training
(age 18 and above)
- II. Interest class (Monday to Sunday)
(age 6 and above)
- III. Schooling preparation
(children age 6 and above awaiting school placement)

Programme Consultants

Dr John Lian Ming-Gon - Professor Emeritus of Special Education, Illinois State University, USA

Mr Andrew Tse - Research Associate, Centre for Advancement in Inclusive & Special Education, University of Hong Kong

Dr Namrata Saxena - Doctorate in Psychology

Ms Amy Tso - Retired Principal of special school

Ms Vikki Cheng - Social Worker in special school

Ms Deborah Lui - Editor-in-Chief (Chinese Language)

Staff and Trainers Team

Ms Concha Bajado - Gabayan - Master of Arts in Education major in Special Education, Philippine Normal University, Manila, Philippines

Mr Will Kwan - Bachelor Degree in Economics, University of Texas at Arlington, Texas

Ms Mui Thomas - A Level-GCE

Ms Yannie So - Bachelor Degree of Education, The Hong Kong Institute of Education Master Degree of Fine Arts in Drama, The Hong Kong Academy of Performing Arts

Ms Mandy Yiu - Bachelor of Fine Arts, The Chinese University of Hong Kong, Department of Fine Arts

Mr Terry Chan - Advanced Diploma in Commercial Design Hong Kong Christian Service



I. Post-secondary social and vocational training (age 18 and above)

Curriculum Structure

It includes four staged related programmes, which represent four phases of development in the growth of the post-school young adults.

The four programmes are :

- A) Foundation Programme
- B) Consolidation Programme
- C) Outreaching Programme
- D) Social Integration Programme

All programmes are fitted into a 5-day full-time time-table. Part Time programme are available for individual modules selection.

Key Learning Areas

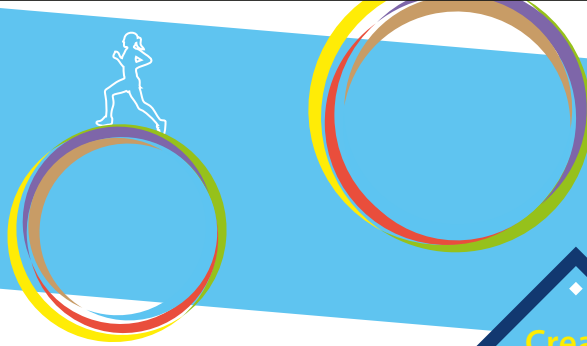
- A) Language and Communication
- B) Mathematics and Problem Solving
- C) Liberal Studies and Independent Living
- D) Leisure, Recreation and Sports
- E) Art and Drama
- F) Experiential Learning
- G) Physical, Mental , Community Health and Human Sexuality

How the programme operates

Trainees choose the programmes that best match their age, interest, talents and development.

Each programme is for one year, after which trainees can move up to the next programme or stay in the same programme for consolidation.

An Individual Training Plan (ITP) will be drawn up to give each trainee maximum benefits from the programme.



Programme Outcome : Integration Into Society Intergration

- Employment
- Internship
- Performing Arts
- Fine Arts



The Rock Signature

- The Rock Troupe (Performing Arts)
- The Rock Artists (Fine Arts)
- 'We All' drama
(collaboration with special schools)

- International Conference
(International Association of
Special Education)

- Friend of L'Arche
International



II. Interest class (age 6 and above)

- Arts & Crafts
- Language (Chinese, English, Putongua)
- Dance
- Music (Violin/Piano/Guitar/Voice)
- Drama
- Music Band

III. Schooling preparation

(children age 6 and above awaiting school placement)



Donation Form

(Donation over \$100 is tax deductible)

Why we need your support?

The Rock Foundation Limited is a non-profit organization. We do not receive any subsidies from the Hong Kong Government. To maintain an affordable fee structure to our service recipients who would require lifelong continuous learning and social support, 70% of our programme cost has to come from generous donations from society. Our service has been effectively lifting up young people who have disabilities / special educational needs. They are given equal opportunity to learn and live a decent life because of our belief and trust in them. Society as a whole becomes more harmonious.


- 1 By crossed cheque, payable to "The Rock Foundation Limited", return to P.O. Box 28158, Gloucester Road Post Office, Hong Kong.
- 2 By direct deposit to THERF account to HSBC Account No. 808-674410-838, please email receipts to info@therf.org.

Name _____

Contact _____



The Rock Foundation
Growing up as a person with special needs
磐石協會關愛成長路

A Member of  HKCSS



For more information and enrollment,
please contact Ms. Hazel D. Chang
at 2815 0216 or info@therf.org

The Rock Foundation Limited

T +852.2815.0260 / +852.3955.2260 | F +852.2815.0261

E info@therf.org | www.therf.org | Charity No: #91/10615

4C, Sun Hey Mansion, 72 Hennessy Road, Wanchai, Hong Kong

香港灣仔軒尼詩道72號新禧大樓4樓C室

P.O. Box 28158, Gloucester Road Post Office, Hong Kong

香港告士打道郵政局 郵政信箱28158號

